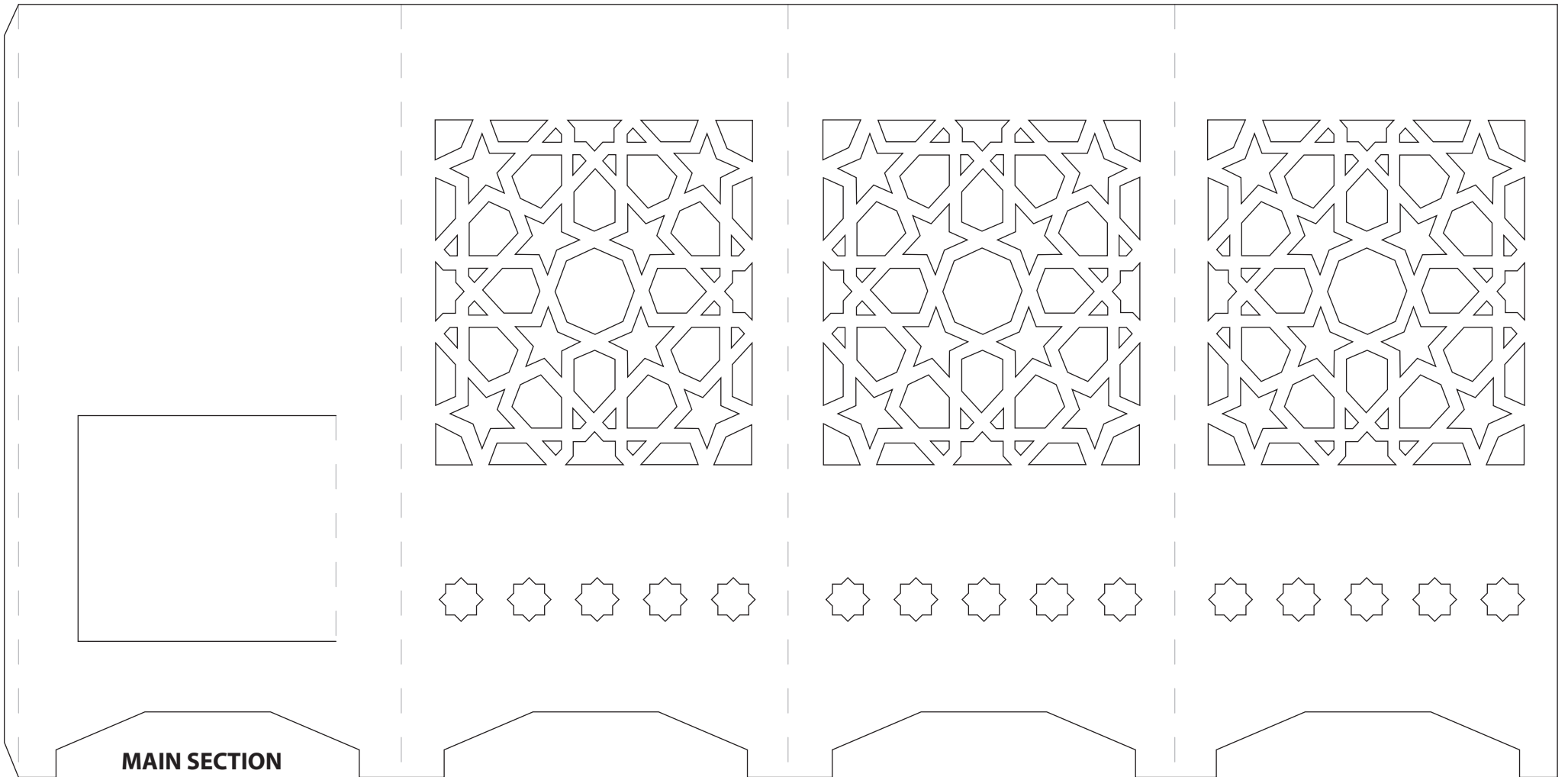
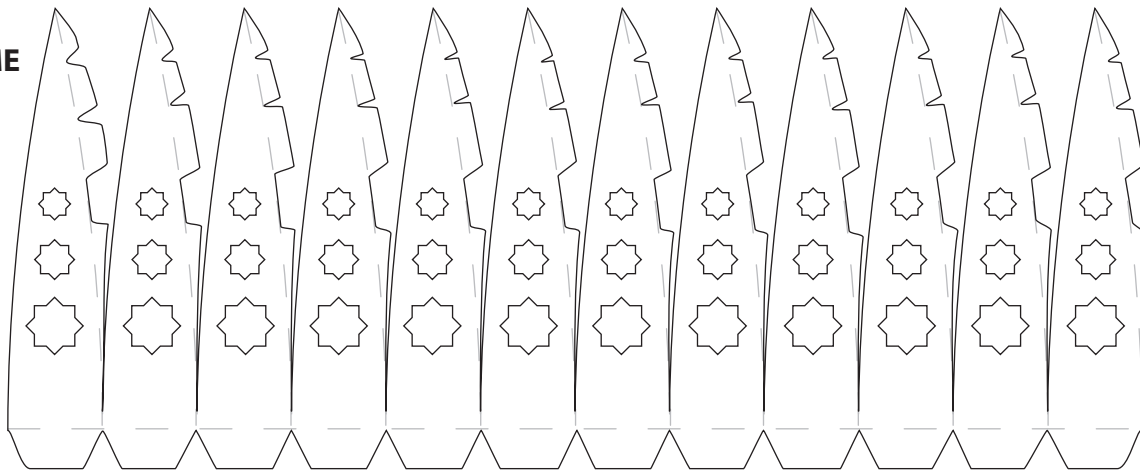


DOME

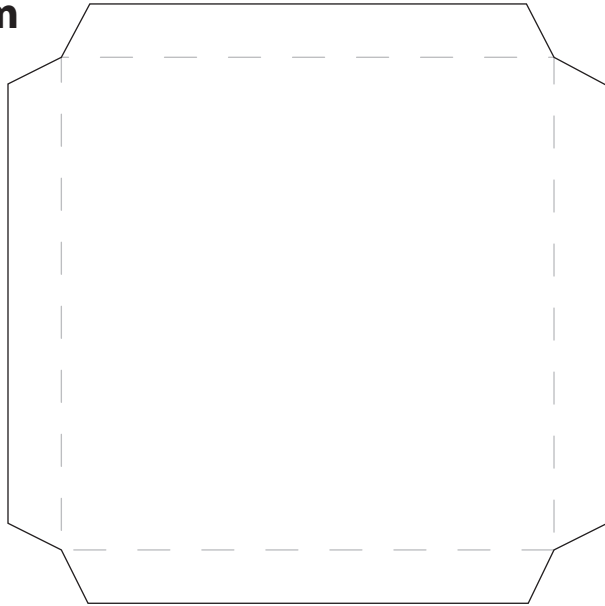
Arabian-Style Lantern by Neil Burley

<http://perfectly4med.co.uk>

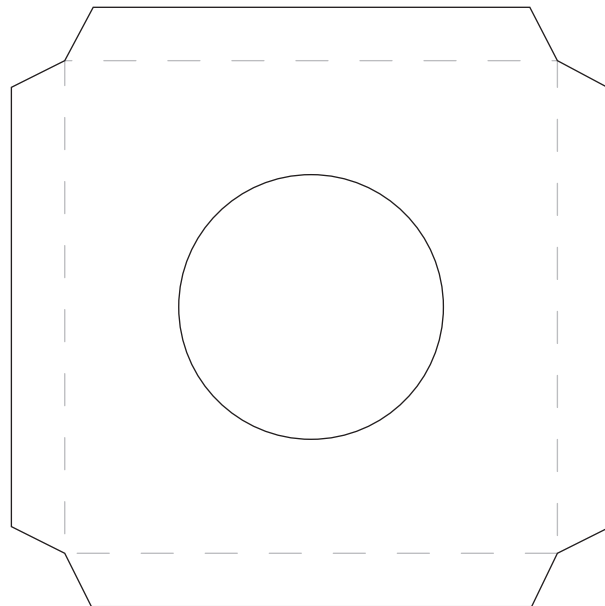


MAIN SECTION

Bottom



Top



Arabian-style Lantern by Neil Burley

Cut out around all the solid lines.

Score the dashed lines.

Fold tabs away from score lines.

Dome section - stick down each tab in turn, with the tips together at the top. This gets easier as you work round. Leave to dry before completing the last join as this is when the most strain happens on the joints. Fold the bottom tabs under and stick down around the circular hole of the top section.

Windows - if you wish to add 'glazing' use transparent colours on acetate sections 8cm x 6cm and stick to the interior surface. Transparent colours include ProMarkers, non-opaque embossing powders, or alcohol inks.

Stick together using strong glue or high tack double sided adhesive tape on all the tabs. The tabs on the top and bottom point out, and their top edge meets the edge of the lantern sides.

More details can be found on my blog:

<http://perfectly4med.co.uk/templates>